



Lean Material Flow Solutions Custom Designed** Double Pallet Hauler w/4-Wheel TrakSteer™

1350 Rockefeller Rd., Wickliffe, OH 44092, PH 440.943.4111, info@KtecInc.com, www.KtecInc.com

ENGINEERED TO ORDER

As the premier designer and manufacturer of **lean material flow solutions**, chances are we have a creative concept just waiting for you. Our engineers are highly skilled at blending the right combination of technology, practicality, simplicity, ruggedness and safety into their solutions. Whether dealing with a new plant, existing plant, warehouse or retrofitting a complete line or single cell, consider making K-Tec your first call.

INDUSTRY LEADING DESIGN

HD Double Pallet TrakSteer™ Cart offers:

- Formed and Welded Continuous Sheet Deck
- 4,000 lb. Rated Deck Loads
- Handles (2) 48 x 48 pallets
- Double 5th Wheel, 4 Wheel Steering (TrakSteer™)
- Self-Stowing Towbar, Clevis / Pin Hitch
- "V" Shaped Push Handle (empty movement)

Numerous "attention to detail" features help K-Tec meet rigorous **safety**, reliability and durability needs. K-Tec ProFlow™ Series products carry a **two (2) year warranty**.¹

COMMITMENT TO SUCCESS

K-Tec identifies and benchmarks relevant applications, addresses ergo/safety issues and provides on-site feasibility reviews where required. Application engineers are available by conference call or direct appointment to help walk through the early planning and front end design phase of lean material flow projects.²

K-Tec also designs ergo-support products such as lifts and conveyors to provide an integrated, dependable solution.

1. See web site for warranty detail. 2. May be subject to consulting charges.

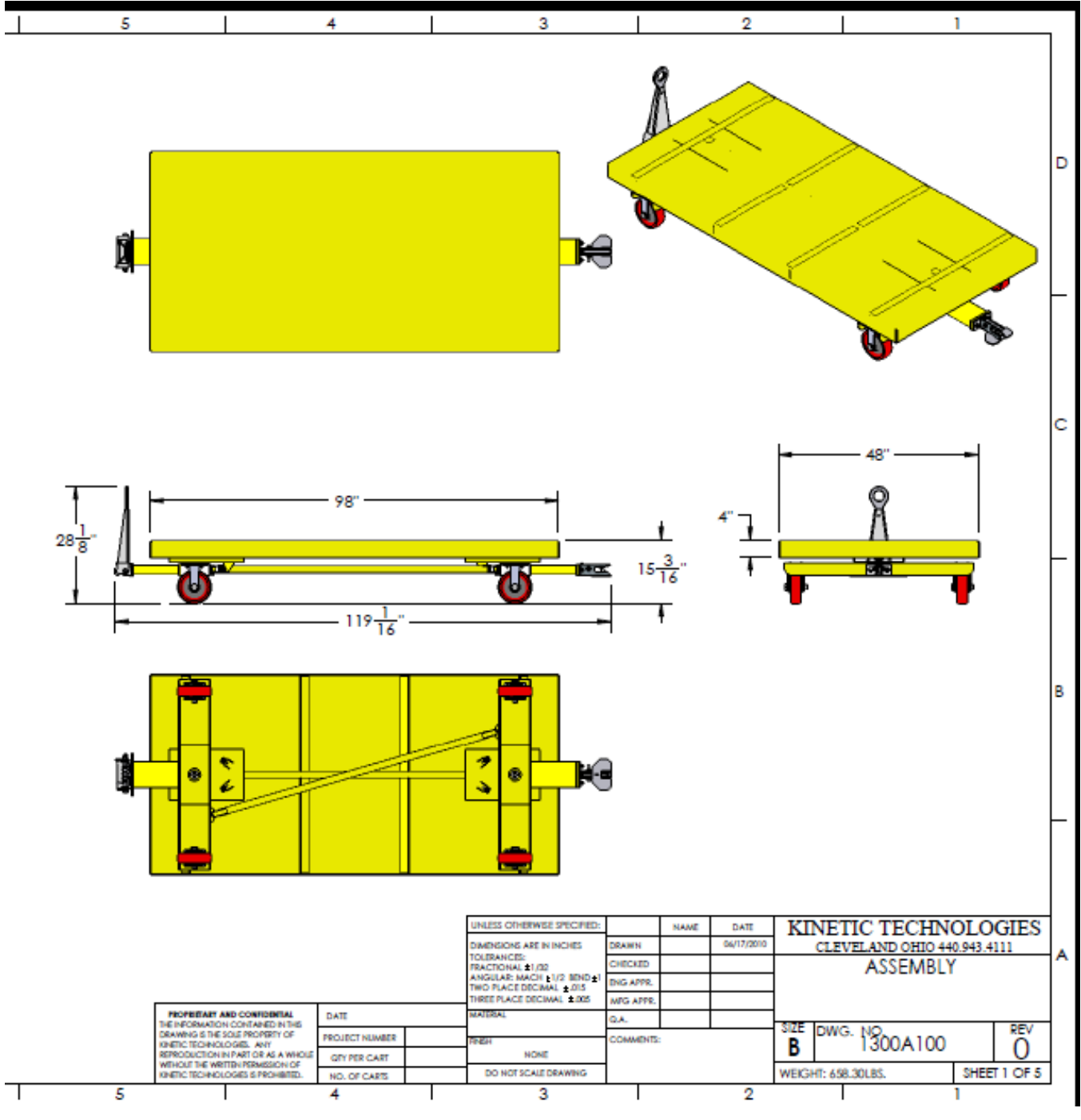
Distributed By:



Lean Material Flow Solutions

CUSTOM DESIGNED SYSTEMS**

1350 Rockefeller Rd., Wickliffe, OH 44092, PH 440.943.4111, info@Kteclnc.com, www.Kteclnc.com



PROPRIETARY AND CONFIDENTIAL
THE INFORMATION CONTAINED IN THIS
DRAWING IS THE SOLE PROPERTY OF
KINETIC TECHNOLOGIES. ANY
REPRODUCTION IN PART OR AS A WHOLE
WITHOUT THE WRITTEN PERMISSION OF
KINETIC TECHNOLOGIES IS PROHIBITED.

DATE	
PROJECT NUMBER	
QTY PER CART	
NO. OF CARTS	

UNLESS OTHERWISE SPECIFIED: DIMENSIONS ARE IN INCHES TOLERANCES: FRACTIONAL ±1/32 ANGULAR: MATCH ±1/2 BEND ±1 TWO PLACE DECIMAL ±.015 THREE PLACE DECIMAL ±.005	NAME	DATE
MATERIAL	DRAWN	06/17/2010
TREAT	CHECKED	
DO NOT SCALE DRAWING	ENG APPR.	
	MFG APPR.	
	Q.A.	
	COMMENTS:	

KINETIC TECHNOLOGIES CLEVELAND OHIO 440.943.4111		
ASSEMBLY		
SIZE B	DWG. NO. 1300A100	REV 0
WEIGHT: 658.30LBS.		SHEET 1 OF 5

Distributed By: